

EU27 Number of interviews: 26.635

Fieldwork: 26/08-16/09/2010

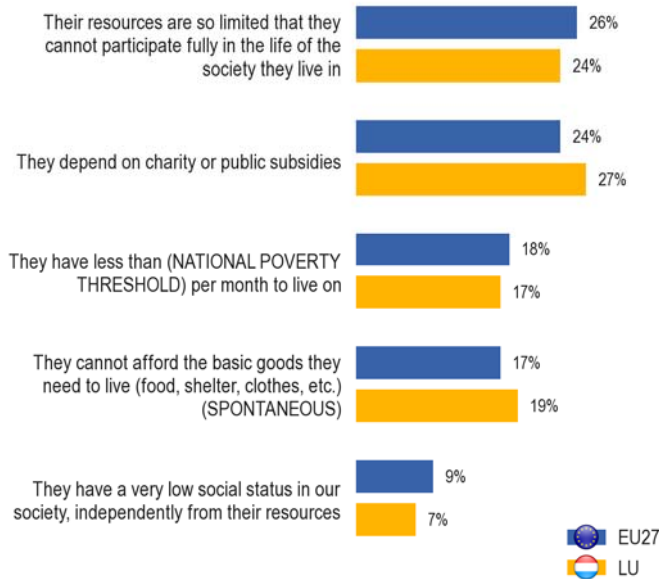
LU Number of interviews: 476

Fieldwork: 27/08-22/09/2010

Methodology: face-to-face

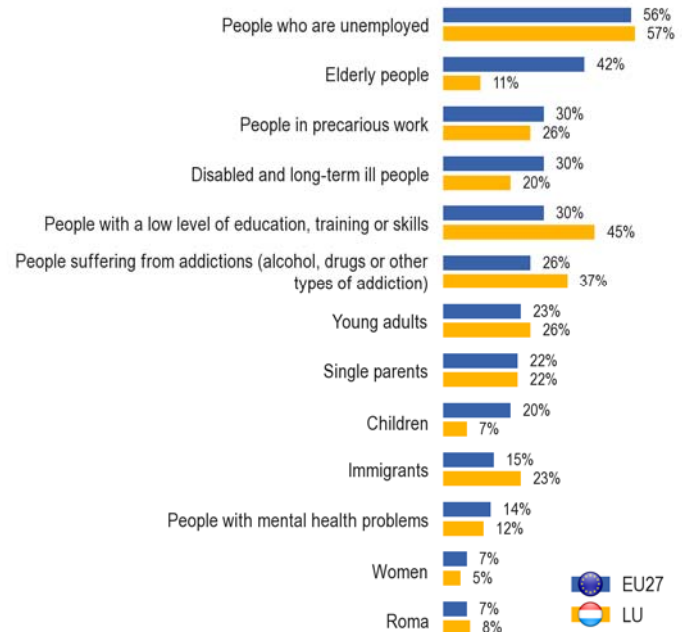
1. HOW DO CITIZENS DEFINE POVERTY?

QA3. There are different ways of defining when people are poor in (OUR COUNTRY). Which of the following statements would best correspond to your definition of being poor? People are poor when...



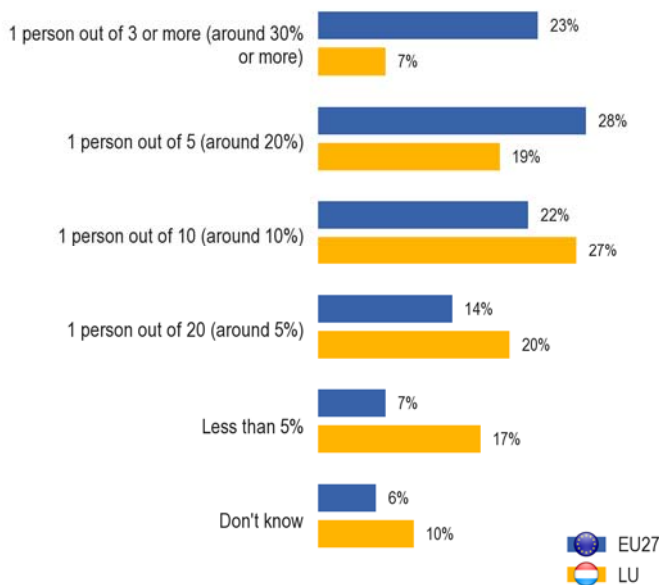
2. WHO IS MOST AT RISK OF POVERTY?

QA10. In your opinion, among the following groups of the population in (OUR COUNTRY), which are those most at risk of poverty?

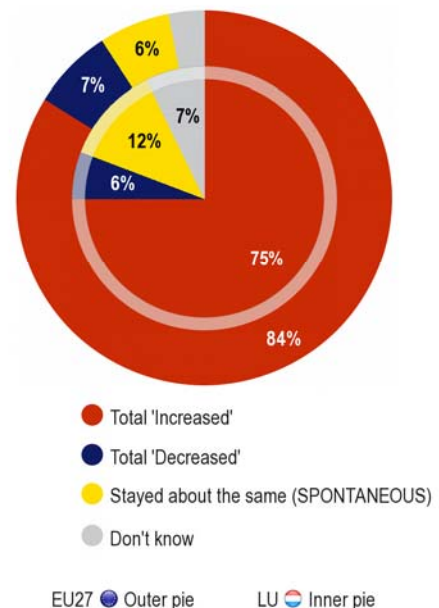


3. HOW MANY PEOPLE ARE POOR AND HAS THE NUMBER INCREASED?

QA5. In your opinion, in (OUR COUNTRY), what proportion of the total population is poor?



QA7.2. Generally speaking, would you say that poverty has strongly increased, somewhat increased, somewhat decreased or strongly decreased in the last three years in (OUR COUNTRY)?



EU27 Number of interviews: 26.635

LU Number of interviews: 476

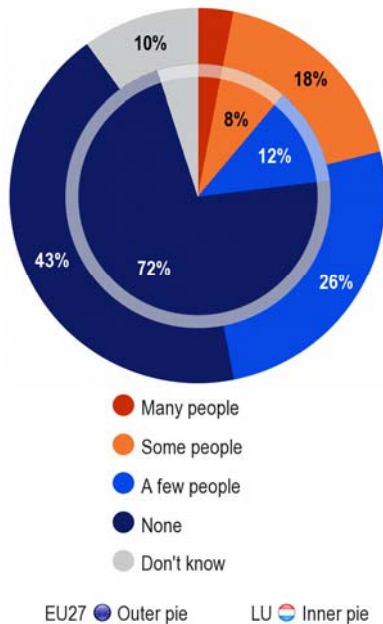
Fieldwork: 26/08-16/09/2010

Fieldwork: 27/08-22/09/2010

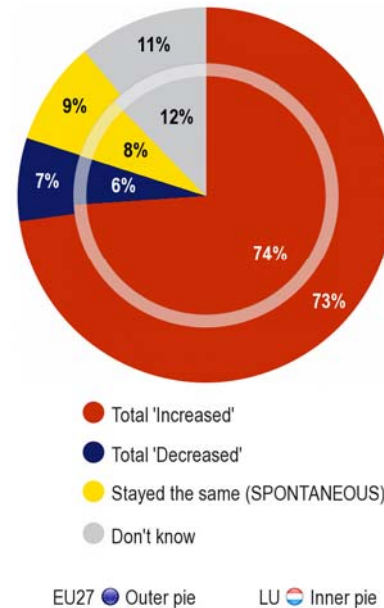
Methodology: face-to-face

4. HOW MANY PEOPLE ARE HOMELESS AND HAS THE NUMBER INCREASED?

QA29. In the area where you live, please tell me if there are people who are homeless? Would you say there are many people, some people, a few people or none who is homeless?

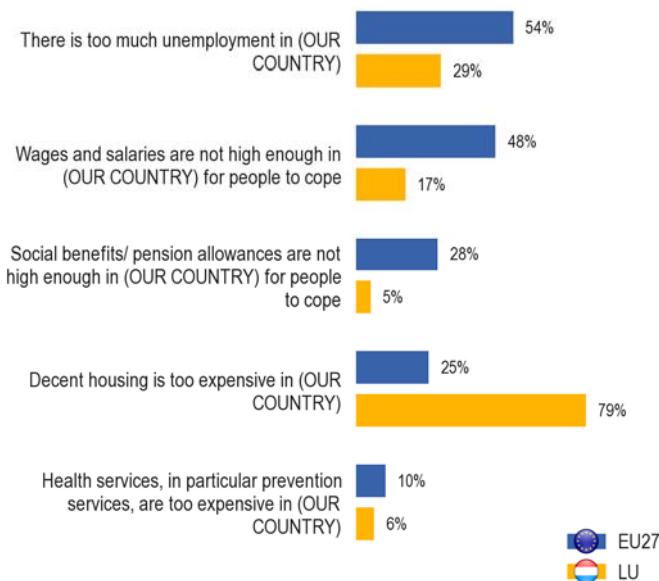


QA30.2. Generally speaking, would you say that the number of homeless people has strongly increased, somewhat increased, somewhat decreased or strongly decreased in the last 3 years in (OUR COUNTRY)?

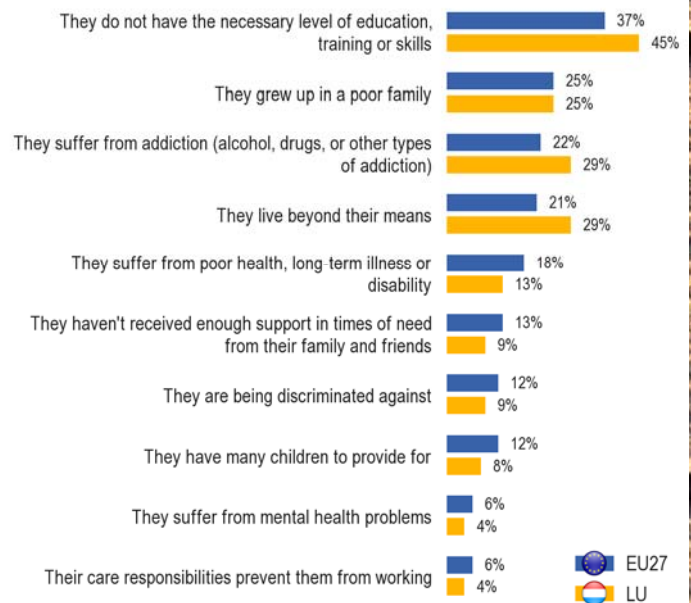


5. WHY ARE PEOPLE POOR?

QA9a. In your opinion, which two of the following things in society might best explain why people are poor?



QA9b. Thinking now about poor people themselves, in your opinion, which two of the following reasons best explain why they are poor?



EU27  Number of interviews: 26.635

Fieldwork: 26/08-16/09/2010

LU  Number of interviews: 476

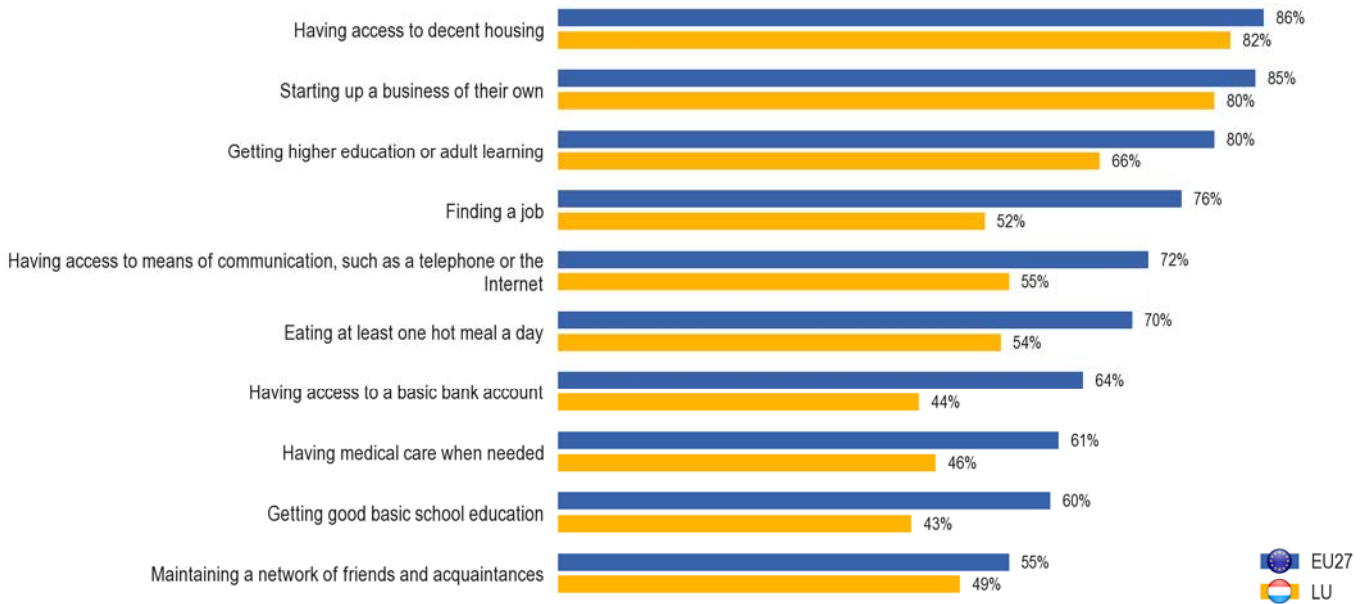
Fieldwork: 27/08-22/09/2010

Methodology: face-to-face

6. WHAT HAPPENS WHEN PEOPLE ARE POOR?

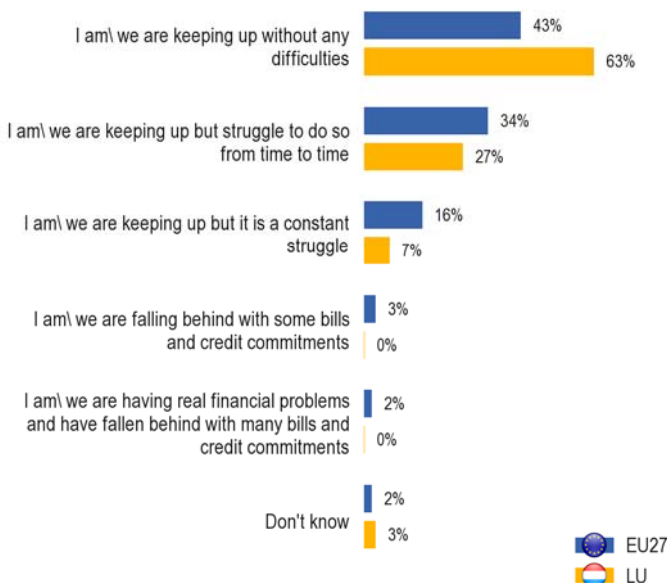
QA12. In (OUR COUNTRY) nowadays, would you say that being poor hampers very much, somewhat, not very much or not at all people's chances of ...?

Answers: Very much + Somewhat



7. ARE CITIZENS ABLE TO KEEP UP WITH THEIR BILLS?

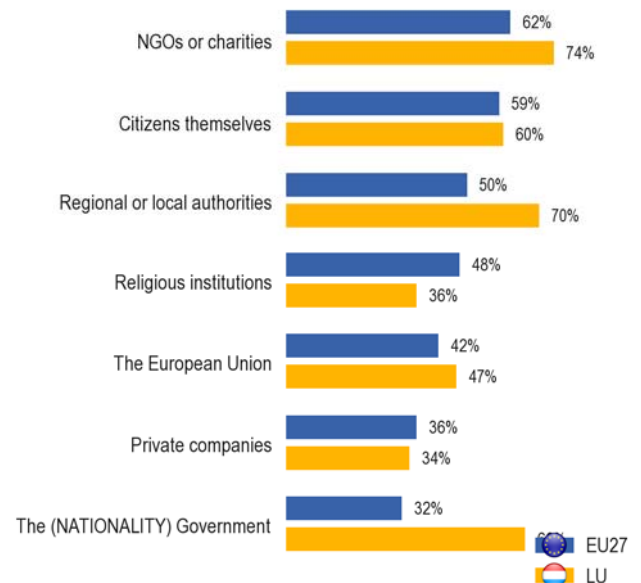
QA37. Looking at this card, which of the following best describes how your household is keeping up with all its bills and credit commitments at present?



8. WHO DO CITIZENS TRUST MOST IN THE FIGHT AGAINST POVERTY?

QA18. For each of the following, please tell me if you tend to trust it or not with regard to their action in combating poverty.

Answer: Tend to trust it



EU27 Number of interviews: 26.635

LU Number of interviews: 476

Fieldwork: 26/08-16/09/2010

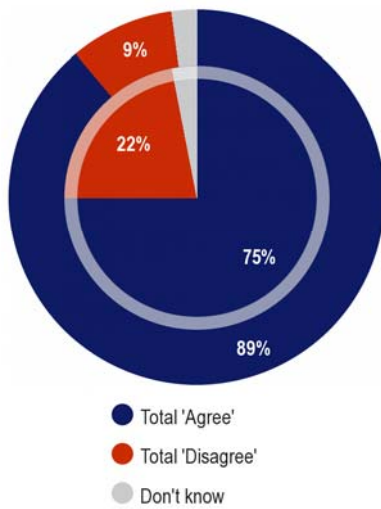
Fieldwork: 27/08-22/09/2010

Methodology: face-to-face

9. CITIZENS' VIEWS ABOUT COMBATING POVERTY

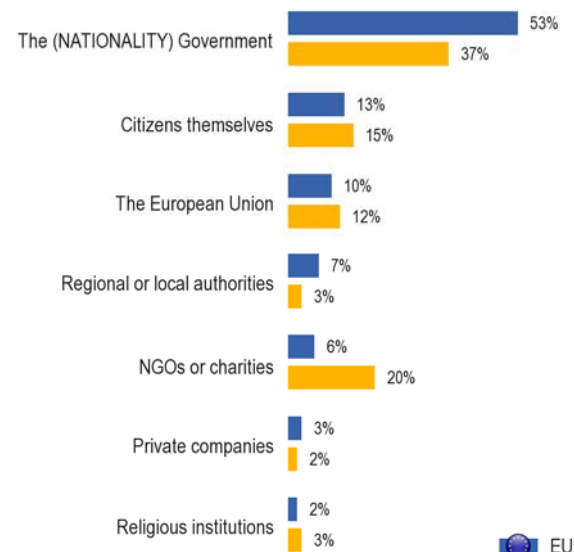
QA14.1. For each of the following statements, please tell me whether you...

Poverty in (OUR COUNTRY) is a problem that needs urgent action by the Government



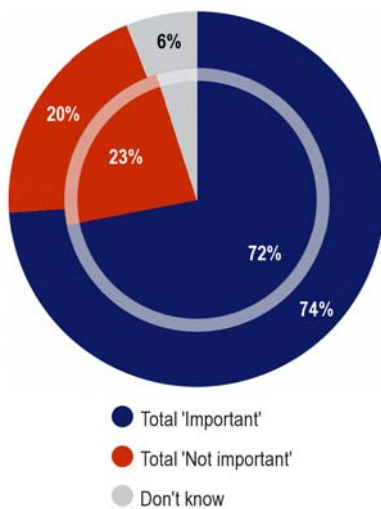
EU27 Outer pie LU Inner pie

QA20. In your opinion, from the following list, who is primarily responsible for reducing or preventing poverty in (OUR COUNTRY)?



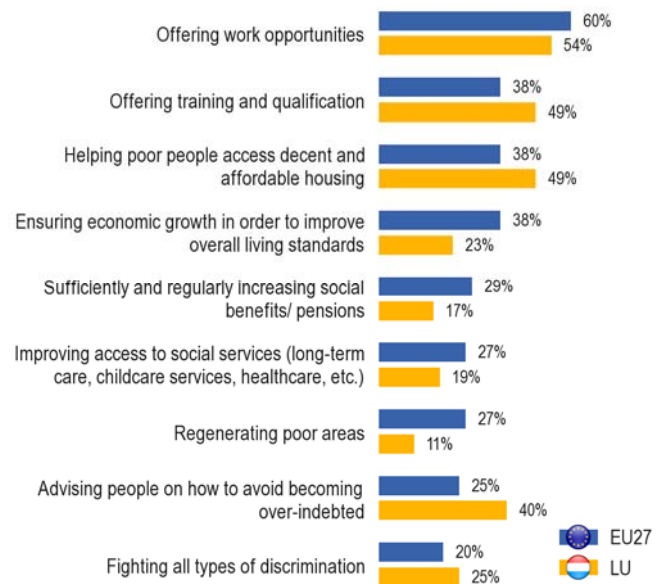
EU27 LU

QA21. Overall, how important would you say is the role of the European Union in the fight against poverty?



EU27 Outer pie LU Inner pie

QA22. In your opinion, from the following, which are the areas the (NATIONALITY) Government should prioritise to help people out of poverty?



EU27 LU

* Other items quoted by less than 20% of respondents at EU level